



SILKEBORG MASKINFABRIK A/S



# Processing Tank Type MPC



**Field of applications:**

Processing viscous products like sour cream, heavy sauces, pizza sauce, plasticised animal lard, pie fillings, pet food and other products containing particulates.

**Capacities:**

500, 750, 1000 and 1250 litres.

**Agitator options:**

TA Total Sweep + agitation

TM Total sweep + mixing

TO Total sweep

SO Scraper blades

SA Scraper blades + agitation

SM Scraper blades + mixing

**Standard tank design:**

The tank is in jacketed insulated design. The inner tank is made of stainless steel, EN 1.4404. It is provided with a stainless steel, EN 1.4301, jacket around shell and bottom for forced circulation of cooling/heating media.

Shell and bottom are insulated with 50 mm mineral wool and covered by an outer shell of full-welded stainless steel, EN 1.4301. The tank has 20° cone type top and 35° cone type bottom with  $\varnothing$  76 mm flanged outlet.

The tank is supported by tubular stainless steel legs with adjustable ball type feet.

**Alternative tank designs:**

Alternative A: Without heating/cooling jacket, but insulated with 50 mm mineral wool covered by an outer shell of full-welded stainless steel, EN 1.4301.

Alternative B: Single shell design

**Internal Finish:**

Top, shell and bottom: 2B with polished welds, max. 1.0  $\mu$ m.

**External Finish:**

Top and shell: Polished welds, max. 1.6  $\mu$ m.

Bottom: Oil brushed

Tank fittings: Brushed welds



The tank is equipped with:

- Circular manway on tank top with safety switch
- Air vent
- Cleaning turbine
- Agitator – type TA, TM, TO, SO, SA or SM

All agitators are complete with gear and electric motor covered by a stainless steel casing.  
Agitator speed: 10 rpm.

**Agitators:**

- Type MPC-TA: Footmounted, heavy duty anchor type agitator, type TA, with blades sweeping close to the tank wall and bottom and with paddles for effective agitation.
- Type MPC-TM: Footmounted, heavy duty anchor type agitator, type TM, with blades sweeping close to the tank wall and bottom and with paddles and static baffles for effective mixing.
- Type MPC-SO: Footmounted, heavy duty anchor type agitator, type SO, with scraper blades working against tank wall and bottom for removal of product film and improved heat transfer.
- Type MPC-SA: Footmounted, heavy duty anchor type agitator, type SA, with scraper blades working against tank wall and bottom for removal of product film and improved heat transfer and with paddles for effective agitation.
- Type MPC-SM: Footmounted, heavy duty anchor type agitator, type SM, with scraper blades for removal of product film and improved heat transfer, and with paddles for effective mixing.
- Type MPC-TO: A heavy duty anchor, type TO, with bottom bearing and blades sweeping close to the tank wall and bottom for effective heat transmission.

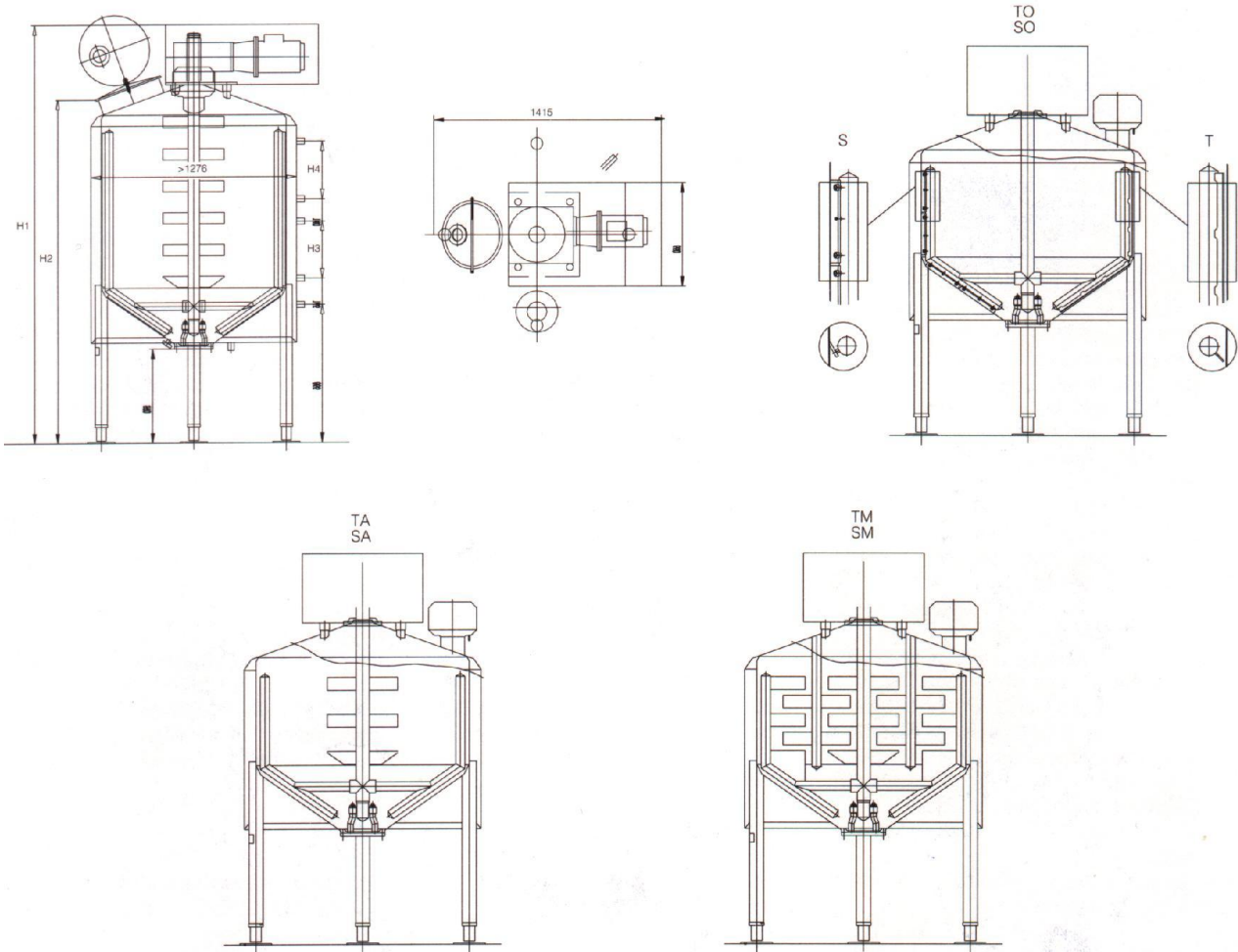
**Extra equipment:**

- Foamless inlet
- Butterfly outlet valve,  $\varnothing 76$  mm
- Sight glass
- Light fittings
- Connection for thermograph or similar instruments
- Flush-closing sample valve
- Stainless steel support plates for legs



- Pole changeable agitator motor
- Flanged circular/rectangular outlet pump connection
- Internal finish max. 0.8 µm
- Other options on request.

**Dimensions:**



Nominal cap. litres	H1 mm	H2 mm	H3 mm	H4 mm	Gross vol. litres	Net vol. litres	Jacket area, bottom m <sup>2</sup>	Jacket area, shell m <sup>2</sup>	Working pressure	Test pressure	Agitator motor
500	2120	1650	360	-	768	640	0.98	1.58	Max. 4.0 bar	Max. 5.2 bar	2.2 kW, 1420 rpm 3 x 380V, 50 Hz
750	2320	1850	560	-	1005	877	0.98	2.30			
1000	2620	2150	360	360	1282	1154	0.98	1.58 + 1.58			
1250	2820	2350	360	560	1487	1359	0.98	1.58 + 2.30			

All information subject to alteration without notice.