



SILKEBORG MASKINFABRIK A/S



Horizontal Tank Type MAR

SILKEBORG MASKINFABRIK A/S
KEJLSTRUPVEJ 108
DK-8600 SILKEBORG

TEL + 45 87 22 48 00
FAX +45 86 82 95 14

E-MAIL SMF@SMF-AS.DK
WEB WWW.SMF-AS.DK

CVR-NO 18494949
ACCOUNT 9899 3328422

**Field of application:**

Dairy, brewery, food and chemical industries.

Capacity:

From 1,600 to 30,000 litres.

Standard designs:

Single shell

50 mm insulation

Jacket and 50 mm insulation

Single shell design:

The tank is made of stainless steel, EN 1.4301. It has 20° cone type ends and is equipped with spoon type tubular outlet.

The tank is supported by tubular stainless steel legs with adjustable ball type feet.

Insulated design:

The tank is made of stainless steel, EN 1.4301. It has 20° cone type ends and is equipped with spoon type tubular outlet.

Shell and ends are insulated with 50 mm mineral wool and covered by an outer shell of full-welded stainless steel, EN 1.4301.

The tank is supported by tubular stainless steel legs with adjustable ball type feet.

Jacketed, insulated design:

The tank is made of stainless steel, EN 1.4301. It has 20° cone type ends and is equipped with spoon type tubular outlet.

It is provided with a stainless steel heating/cooling jacket, EN 1.4301, around the shell for forced circulation of water. Max. inlet pressure to jacket 4 bar.

Shell and ends are insulated with 50 mm mineral wool and covered by an outer shell of full-welded stainless steel, EN 1.4301.

The tank is supported by tubular stainless steel legs with adjustable ball type feet.

Internal finish:

2B with polished welds, max. 1.0 µm.

**External finish:**

Polished, max. 1.6 μm .

Tank fittings: Brushed welds.

Alternative designs:

Inner tank made of EN 1.4404 stainless steel

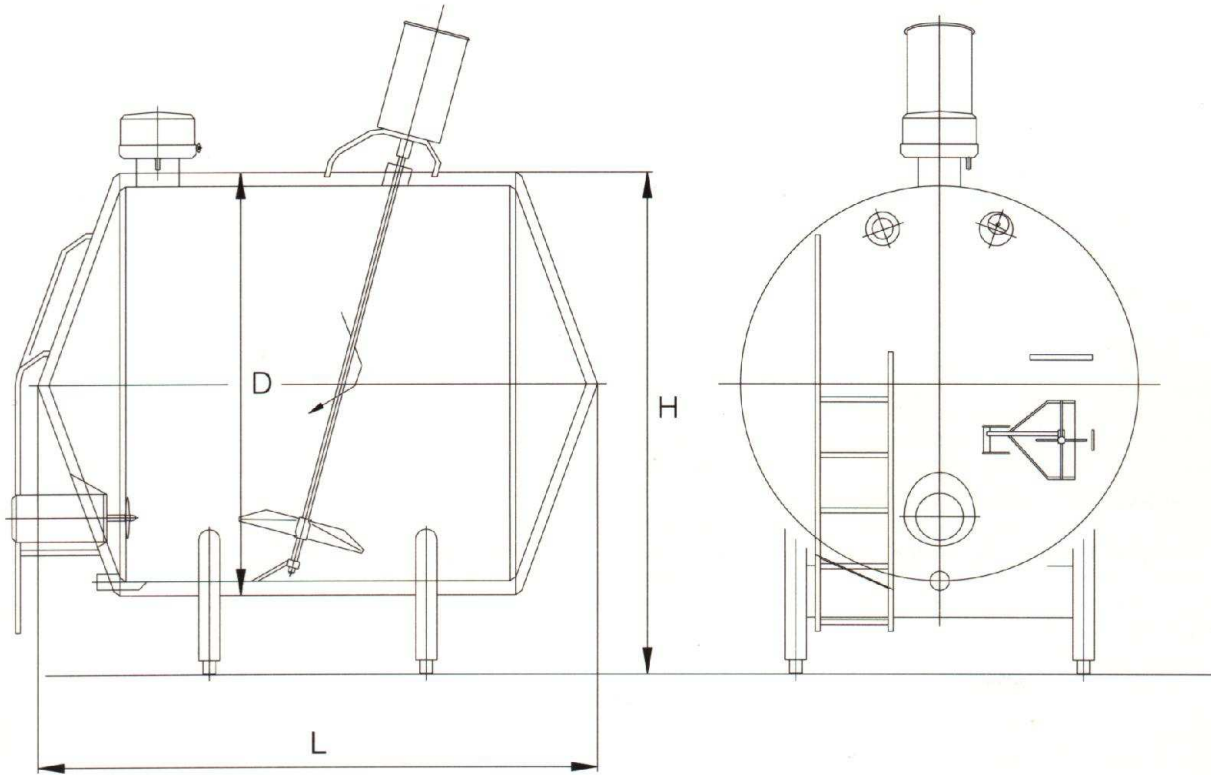
Cone type legs

Extra equipment:

- Foamless inlet
- Foamless inlet, removable
- Airvent
- Swan necks
- Circular manway on tank top
- Oval manway cover on shell (only tanks of 5000 litres or more)
- Safety switch for agitator
- Anti vortex device
- Cleaning turbine
- Spray ball removable
- Sight glass
- Light fittings
- Dial thermometer
- Connection for PT-100 temperature sensor or similar
- Flange for level transmitter
- Connections for level probes
- Stainless steel ladder with safety hoop
- Capacity scale glassblasted on inner tank wall
- Sample valve, type Keofitt
- Stainless steel support plates for feet
- Vertical agitator, type RCI/ALTB/ALT
- Horizontal agitator, type as RCN/ALS
- Frame type agitator
- Extended legs - max. 900 mm
- Motor cover for agitator
- Internal finish max. 0.8 μm
- Other options on request



Dimensions:



Ltr.	1600	2000	3200	4000	5000	6000	7500	10000	12000	15000	17500	20000	23000	25000	28000	30000
Legs	4	4	4	4	4	4	4	4	4	4	4	4	6	6	6	6

Single Shell Tank

D	1146	1146	1432	1432	1432	1910	1910	1910	2387	2387	2387	2865	2865	2865	2865	2865
H	1664	1664	1949	1949	1949	2427	2427	2427	2904	2904	2904	3382	3382	3382	3382	3382
L	1900	2300	2406	3006	3606	2580	3180	4180	3354	3954	4554	3958	4328	4728	5128	5528
Kgs	300	400	500	600	650	750	850	950	1000	1100	1250	1300	1350	1400	1450	1500

Insulated 50 mm

D	1279	1279	1565	1565	1565	2043	2043	2043	2520	2520	2520	2998	2998	2998	2998	2998
H	1710	1710	1995	1995	1995	2475	2475	2475	2950	2950	2950	3430	3430	3430	3430	3430
L	2012	2412	2516	3116	3716	2690	3290	4290	3464	4064	4664	4038	4438	4838	5238	5638
Kgs	500	550	700	800	950	1100	1250	1400	1500	1800	2050	2000	2200	2300	2500	2600

With jacket and insulation 50 mm

D	1279	1279	1565	1565	1565	2043	2043	2043	2520	2520	2520	2998	2998	2998	2998	2998
H	1710	1710	1995	1995	1995	2475	2475	2475	2950	2950	2950	3430	3430	3430	3430	3430
L	2012	2412	2516	3116	3716	2690	3290	4290	3464	4064	4664	4038	4438	4838	5238	5638
Kgs	900	1100	1400	1600	1900	2200	2500	3000	3300	3800	4100	4400	4800	5100	5500	5800

All information subject to alteration without notice.